



Introduction and Objectives of the Training Course

TRAINING COURSE ON CORPORATE-LEVEL GHG INVENTORY
(31 OCTOBER – 2 NOVEMBER 2012, BANDUNG, INDONESIA)

Dominik Schmitz

Project financed by DG Climate Action of the European Commission.

Background Information

- Indonesia's GHG emission reduction target by 2020:
 - 26% using domestic funding;
 - 15% using international funding support and with possible participation of the private sector or industries
- In RAD-GRKs GHG emissions in the industry sector had only been identified but not yet quantified – follow up work in 2013.
- MoI and private companies should be trained in preparing GHG inventory and quantification of mitigation actions in a manner that is transparent, accurate, consistent, complete, and comparable (TACCC);
- There could be private companies/enterprises in Indonesia who are willing to participate in voluntary GHG monitoring and reporting, also to support RAN-GRK.

Objectives

General:

- To train **Mol and selected companies** on how to perform calculation of emissions in the IPPU sectors (and possibly Energy sector), using the IPCC Guidelines and GHG Protocol developed by the World Business Council for Sustainable Development (WBCSD).

Specific:

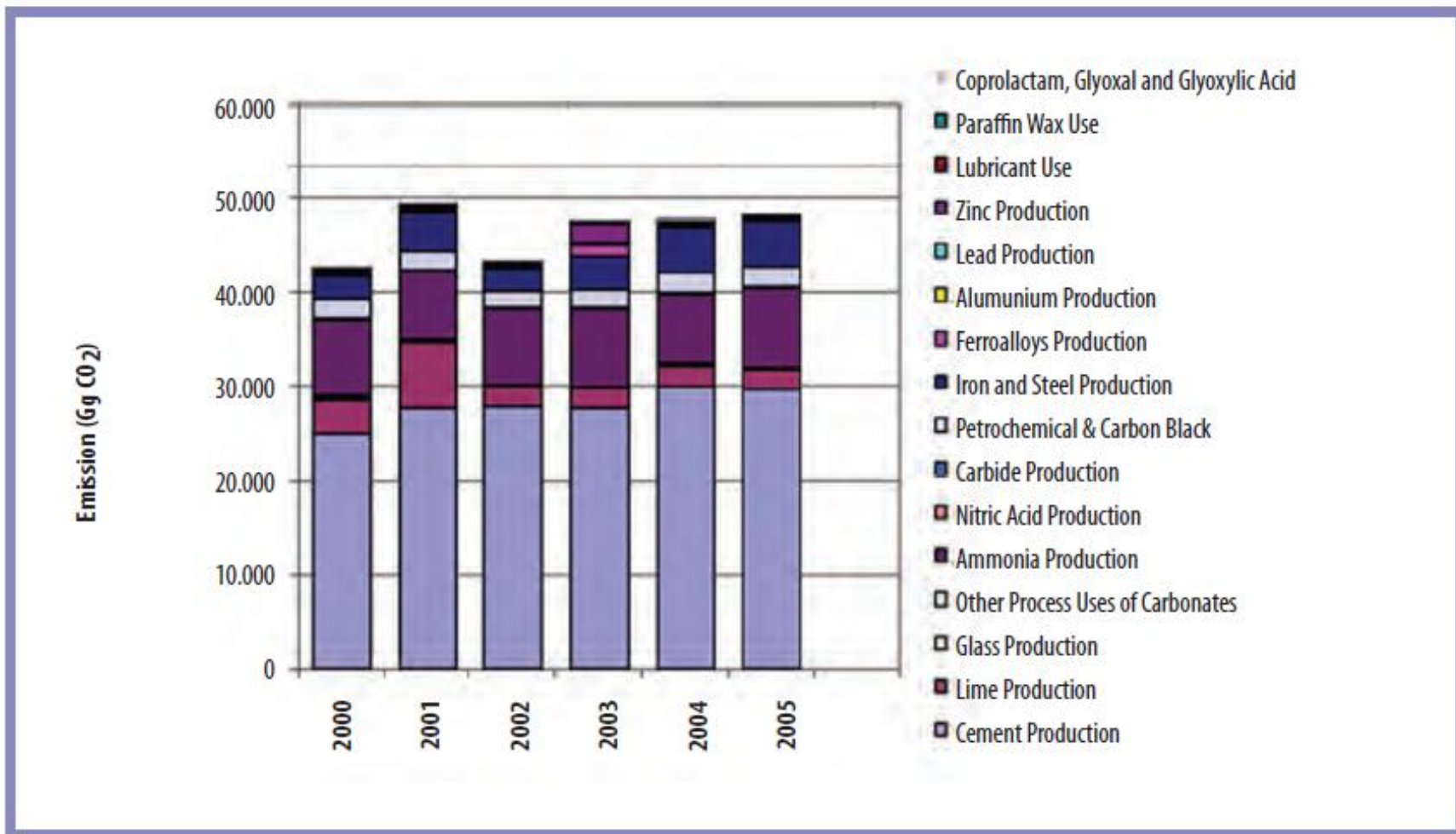
- The focus of the training will be on the manufacturing industries which could include:
 - iron and steel industry
 - cement industry
 - pulp and paper industry
 - beverage industry
 - aluminum industry, and
 - fertilizer industry

Agenda Day 1

- Opening Session
- Updates on current initiatives by government re: PR#71 and PR#61 and the role of the private sector
- Presentation on the current initiatives on GHG inventory in the private sector and in the MoI

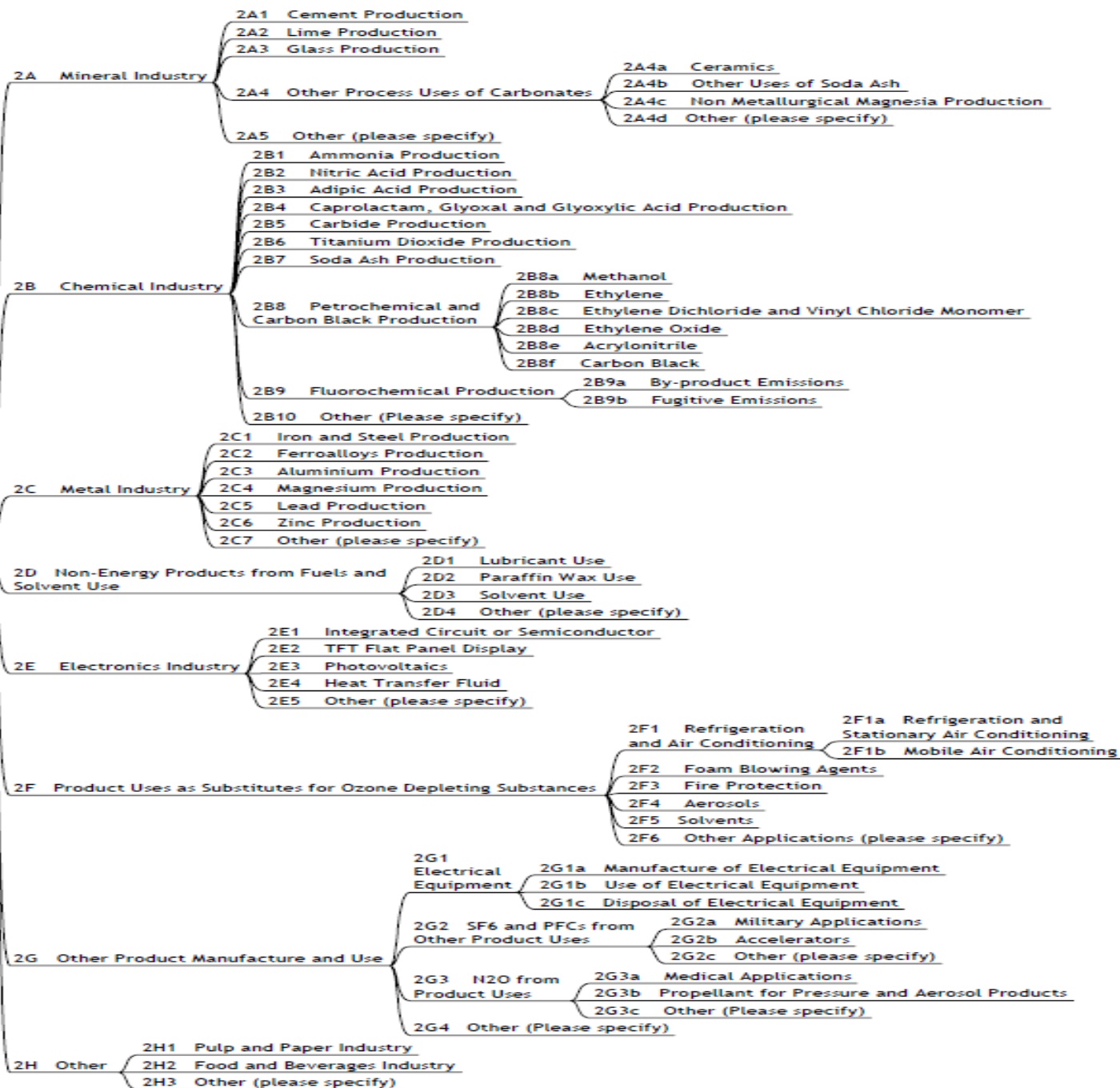
- Start of GHG Inventory Training Course with focus on **quantifying historical Process and Product use emissions**, e.g. 2010 GHG inventory according to IPCC guidelines
- Learn about IPCC software

Industrial processes: relevant sectors in Indonesia



Source: Second National Communication Indonesia, 2010

2 INDUSTRIAL PROCESSES and PRODUCT USE



Some examples:

Indonesia 2005 Emissions: 1.400.000.000 tons CO₂e

Austria 2010 Emissions: about 80.000.000 tons CO₂e

NTT 2010 Emissions: about 3.000.000 tons CO₂e
(without waste sector)

- **Energy**
 - Power Plants 351.260 tCO₂
 - Transport 723.690 tCO₂
- **Industry**
 - Cement 109.200 tCO₂
- **Agriculture and Land use Livestock:** 1.732.221 tCO₂

Emissions of IPPU sector and your company in 2010 ?

How to measure Green House Gases?

Direct measurement of CO₂, N₂O concentration e.g. to measure N₂O in Nitric acid production

Costly and sophisticated procedure



What do we need for GHG measurement:

...Data, Data and Data....

1. Production data of the companies or the sector Indonesia, so called „Activity Data“:

- Statistics of cement produced
- Production of steel
- Plants and their fuel consumption
- ...

2. Emission Factors:

- Country specific data available? E.g. of fuel carbon content?
- IPCC defaults

Agenda Day 2

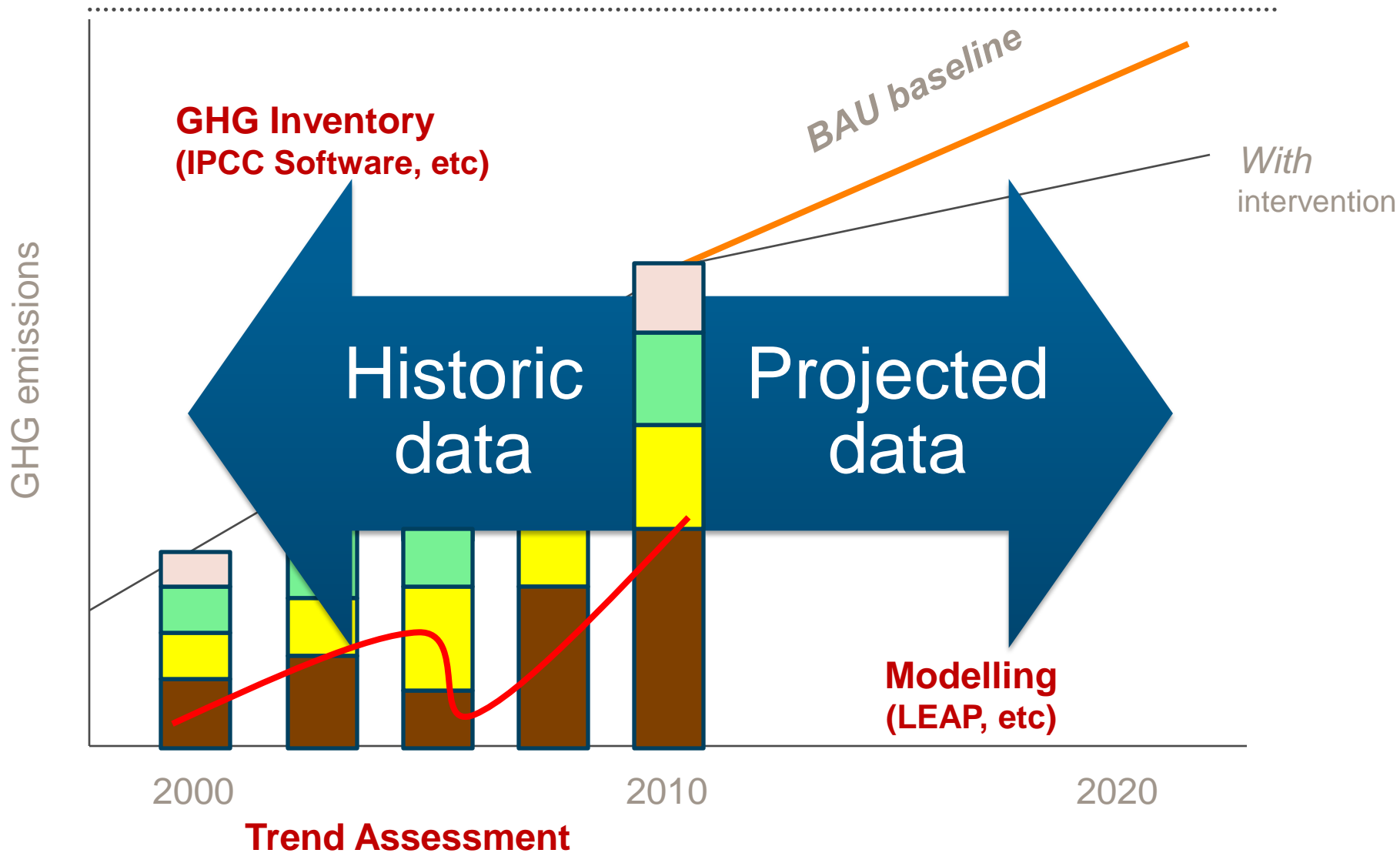
Morning

- Quantification of emissions in your company
- Green House Gas Protocol Standard

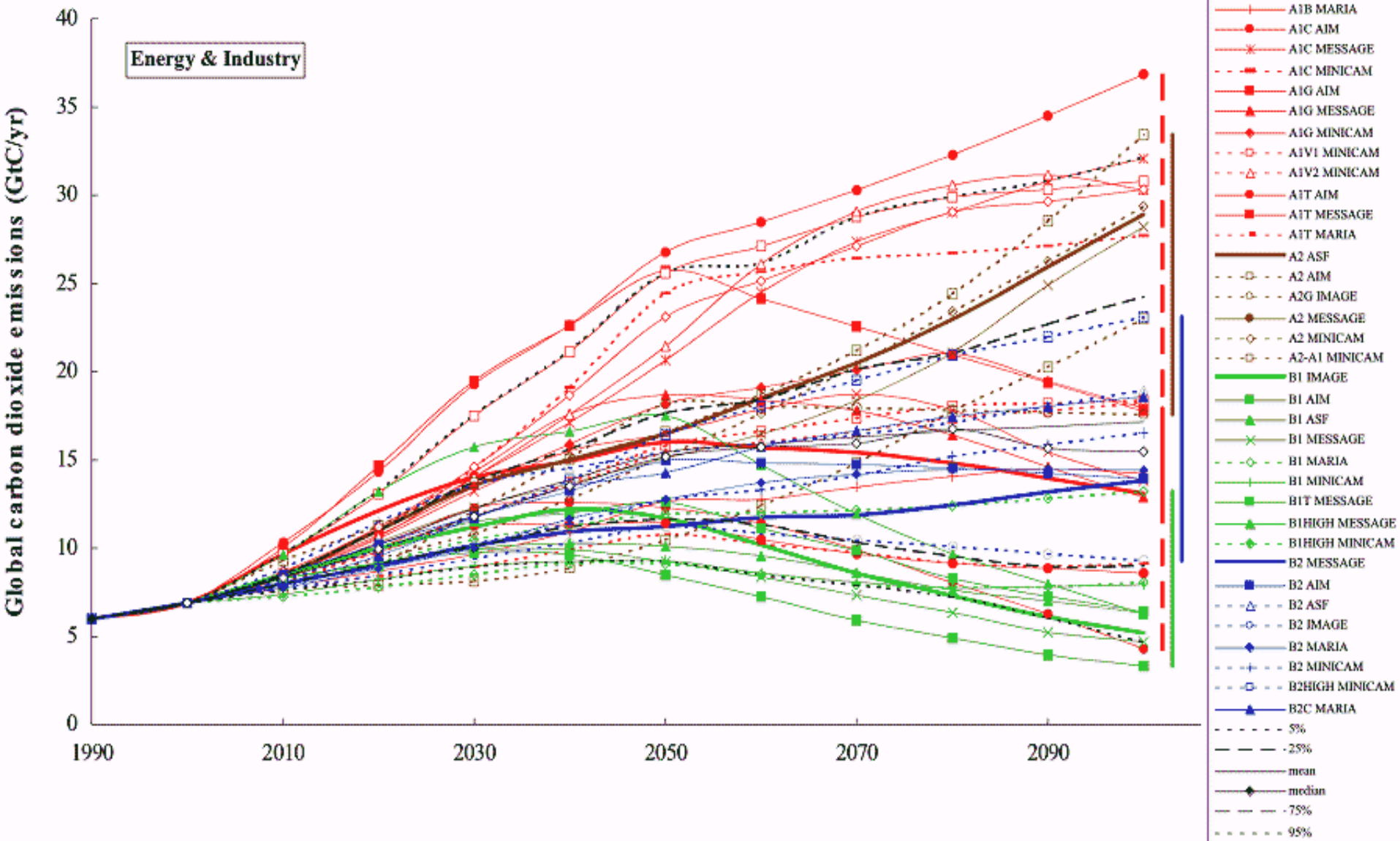
Afternoon

- Developing of a Business as usual scenario – until 2020
- Calculation of future emission trends in the sector or company

GHG Inventory towards BAU baseline



Baseline scenario + mitigation scenarios



Agenda Day 3

Morning

- Quantification of mitigation actions
- RAN-GRK, RAD-GRK mitigation actions
- CDM, NAMAs, climate finance

Afternoon

- Confidentiality
- Wrap up and Closing

RAN-GRK core activities

SECTOR	4. INDUSTRY
Emissions reduction target (26%):	0,001 (Giga ton)
Emissions reduction target (41%):	0,005 (Giga ton)

Policies Done in Support of RAN-GRK:

1. Improving industrial growth through optimized utilization of energy.

Strategy:

1. Carry out audit energy especially in energy-intensive industries.
2. Provide incentive through energy efficiency program.

NO	ACTION PLAN	GOAL INDICATOR	ACTIVITY VOLUME	PERIOD	LOCATION	COST		RESPONSIBLE PARTY (RP)/ IMPLEMENTOR	NOTES
						IDR (billion)	SOURCE		
1.	Prepare technical policy on CO ₂ emission reduction in cement and steel industries.	Technical policy on CO ₂ emission reduction in cement and steel industries established.	2 industry sectors (cement and steel)	2010 – 2014	Cement: Sumatra, Java Sulawesi, NTT	2010–2014: 350,0	State Budget, Private sectors, Grant	Ministry of Industry	
				2015 – 2020	Steel: North Sumatra, South Sumatra, West Kalimantan, South Kalimantan,	2015–2020: -			